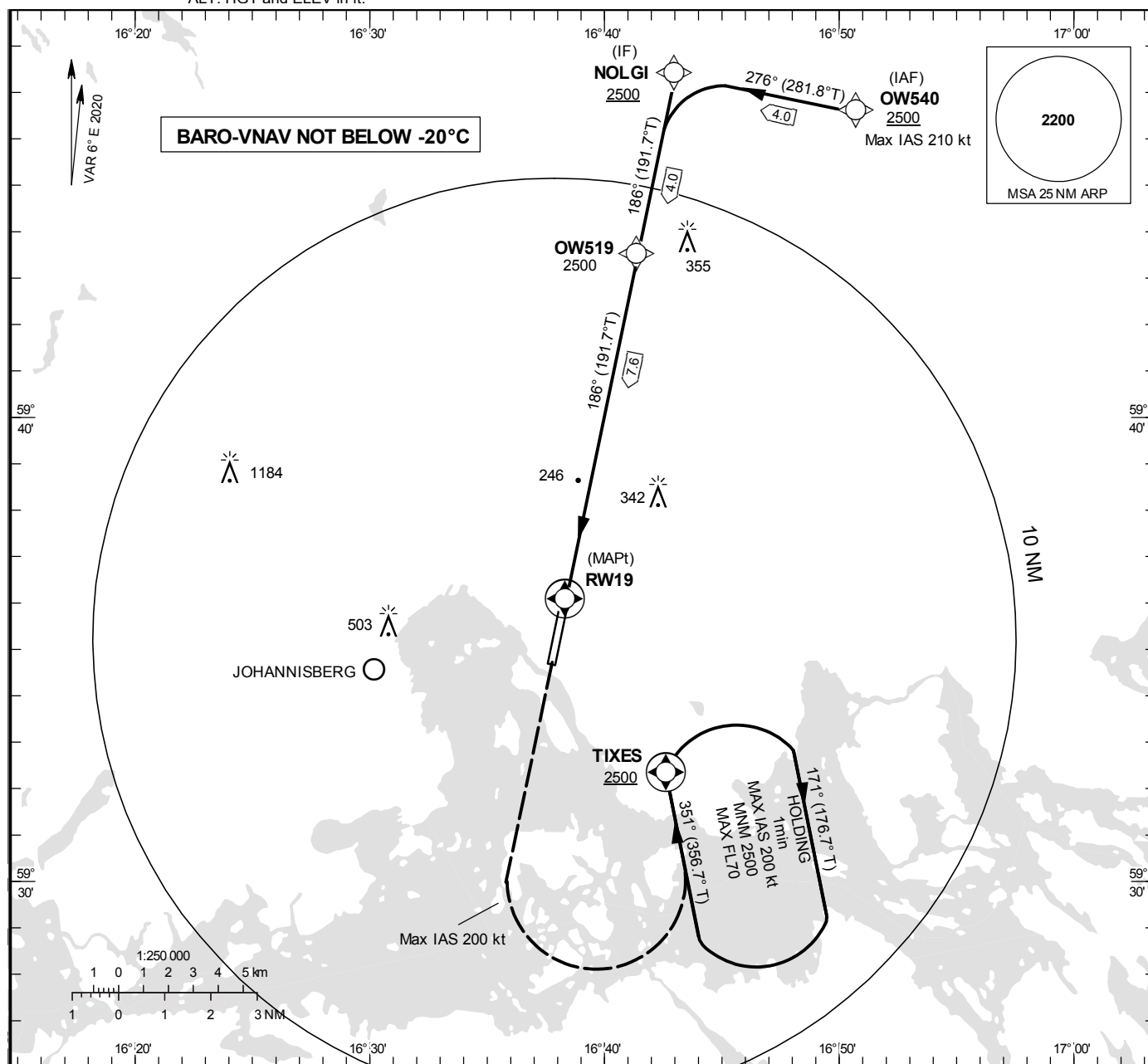


RNP RWY 19

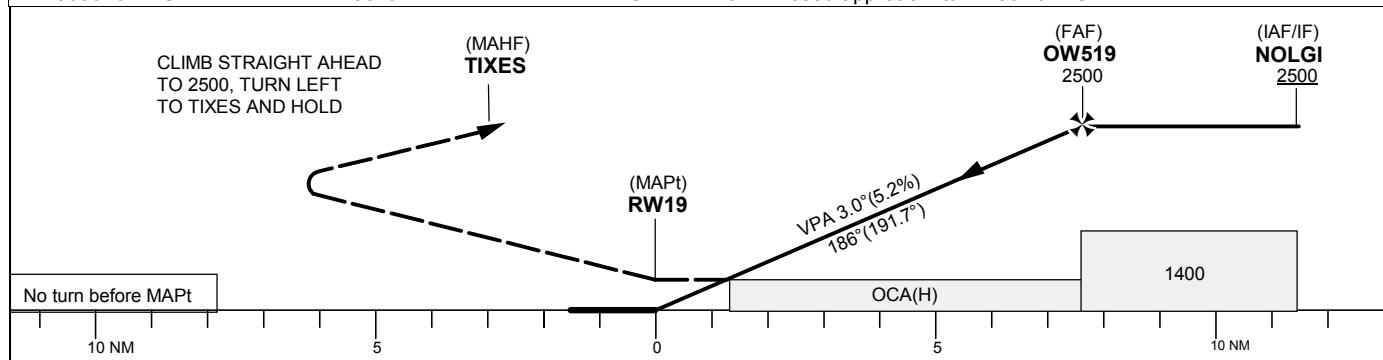
INSTRUMENT APPROACH CHART – ICAO

THR ELEV 21.7 ft, AD ELEV 21 ft
 OCH are related to THR.
 Circling OCH are related to AD ELEV
 BRG are MAG (True).
 ALT. HGT and ELEV in ft.

VÄSTERÅS TOWER	130.605
----------------	---------



TA 5000 ft AMSL	RDH 50 ft	MAX SPEED within missed approach turn 200 kt IAS
-----------------	-----------	--



OCA (H)					Final approach	Distance FAF-MAPt 7.6 NM						
Cat of ACFT	A	B	C	D	Dist to RW19	7	6	5	4	3	2	1
LPV	339(317)	349(327)	358(336)	368(346)	ALT	2300	1990	1670	1350	1030	710	390
LNAV/VNAV	348(326)	358(336)	368(346)	378(356)								
LNAV	500(478)											
Circling	530(510)	550(530)	900(880)	900(880)								

AIRAC AIP AMDT 3/2025

STOCKHOLM/Västerås

RNP RWY 19 via NOLGI

Path Desc	Waypoint Identifier	Fly-over	Course °M(°T)	Dist /Time	Turn Dir	Altitude	Speed	VPA/ RDH	Rec Navaid	Navigation Specification
IF	NOLGI	N	-	-	-	+2500	-	-	-	RNP APCH
TF	OW519	N	186°(191.7°)	4.0 NM	-	@2500	-	-	-	RNP APCH
TF	RW19	Y	186°(191.7°)	7.6 NM	-	@72	-	-	-	RNP APCH
FA	-	-	186°(191.7°)	-	-	@2500	-200	-	-	RNP APCH
DF	TIXES	Y	-	-	L	+2500	-200	-	-	RNP APCH
HM	TIXES	Y	351°(356.7°)	1 min	R	+2500	-200	-	-	RNAV1

RNP RWY 19 via OW540

Path Desc	Waypoint Identifier	Fly-over	Course °M(°T)	Dist /Time	Turn Dir	Altitude	Speed	VPA/ RDH	Rec Navaid	Navigation Specification
IF	OW540	N	-	-	-	+2500	-210	-	-	RNP APCH
TF	NOLGI	N	276°(281.8°)	4.0 NM	L	+2500	-210	-	-	RNP APCH
TF	OW519	N	186°(191.7°)	4.0 NM	-	@2500	-	-	-	RNP APCH
TF	RW19	Y	186°(191.7°)	7.6 NM	-	@72	-	-	-	RNP APCH
FA	-	-	186°(191.7°)	-	-	@2500	-200	-	-	RNP APCH
DF	TIXES	Y	-	-	L	+2500	-200	-	-	RNP APCH
HM	TIXES	Y	351°(356.7°)	1 min	R	+2500	-200	-	-	RNAV1

FAS Data Block

RNP RWY 19

Input data

Operation Type	0
SBAS Provider	1 (EGNOS)
Airport Identifier	ESOW
Runway	19
Runway Letter	0 (None)
Approach Performance Designator	0
Route Indicator	
Reference Path Data Selector	0
Reference Path Identifier	E19A
LTP/FTP Latitude	593604.2305N
LTP/FTP Longitude	0163818.5090E
LTP/FTP Ellipsoidal Height (metres)	32.1
FPAP Latitude	593442.5430N
Delta FPAP Latitude (seconds)	-81.6875
FPAP Longitude	0163745.3020E
Delta FPAP Longitude (seconds)	-33.2070
Threshold Crossing Height	50.0
TCH Units Selector	0 (feet)
Glidepath Angle (degrees)	3.00
Course Width (metres)	106.75
Length Offset (metres)	0
HAL (metres)	40.0
VAL (metres)	50.0

Output data

Data Block	10 17 0F 13 05 13 00 00 01 39 31 05 0D FB 93 19 1A F5 23 07 41 15 D1 81 FD 92 FC FE F4 01 2C 01 6B 00 C8 FA AE 02 BE 51
Calculated CRC Value	AE02BE51

Required Additional Data

ICAO Code	ES
LTP/FTP Orthometric Height (metres)	6.6